

How to network the Trigold client database.

Networking the client data requires a shared network drive to be set up. Within this shared network drive must be a shared folder which contains the Trigold client data. Each Trigold installation must point to this shared folder on the network drive. Each machine must have a local installation prior to pointing Trigold to the shared drive.

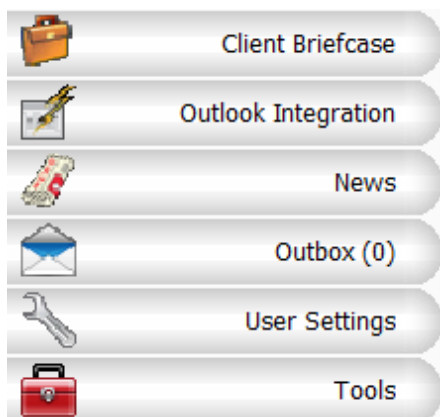
Step 1: Setting up a shared network folder

1. On the shared network drive, create the Trigold folder. You can call this anything you want as long as it is easily recognised as being part of the Trigold system (TRIGOLD, TRIGOLDDATA)
2. Once you have created the folder, you need to copy your client database files from the local installation. The client data files are:
 - Userdata.dat
 - Factfind.mdb
 - Outbox.mdb
 - Saved (yellow folder)

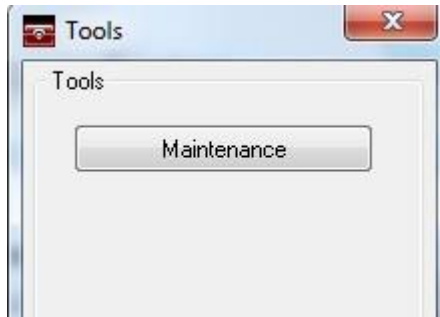
Step 2: Locating your client data

To locate your client data, you will need to:

1. Launch Trigold
2. Click on the Tools button located in the bottom left hand corner

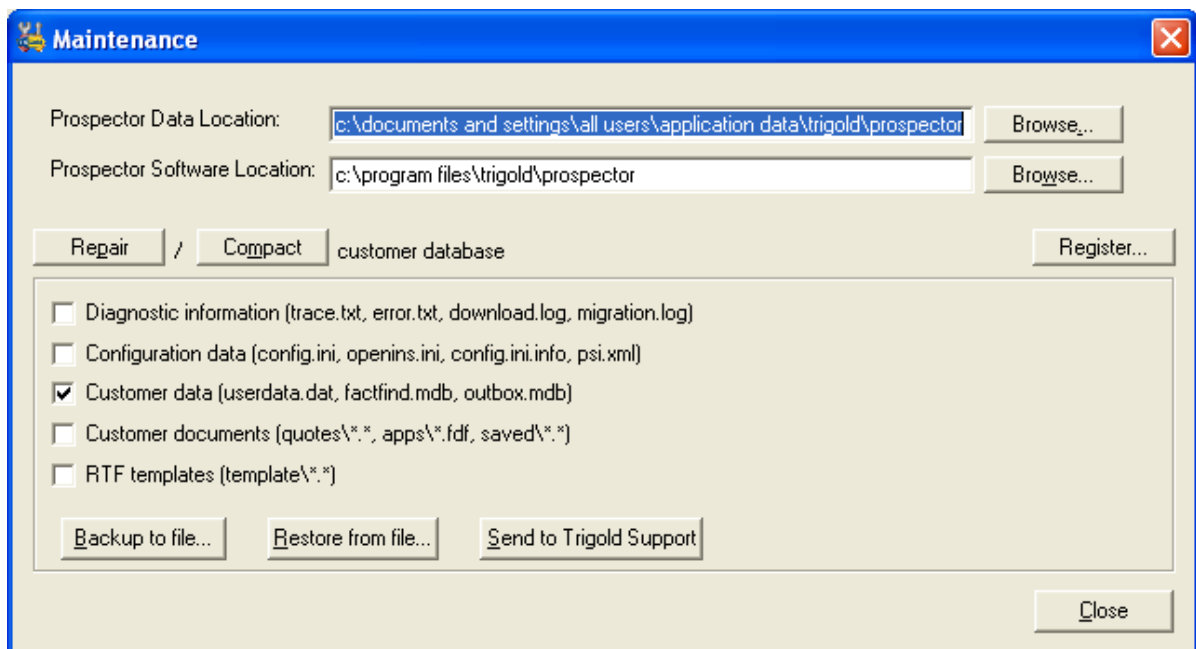


3. Click on the Maintenance button



Alternatively, click on your Windows Start button – Programs (All Programs) – TrigoldCrystal – Prospector – Tools – Maintenance

1. Within the Maintenance box, copy the Data location (highlighted in blue)



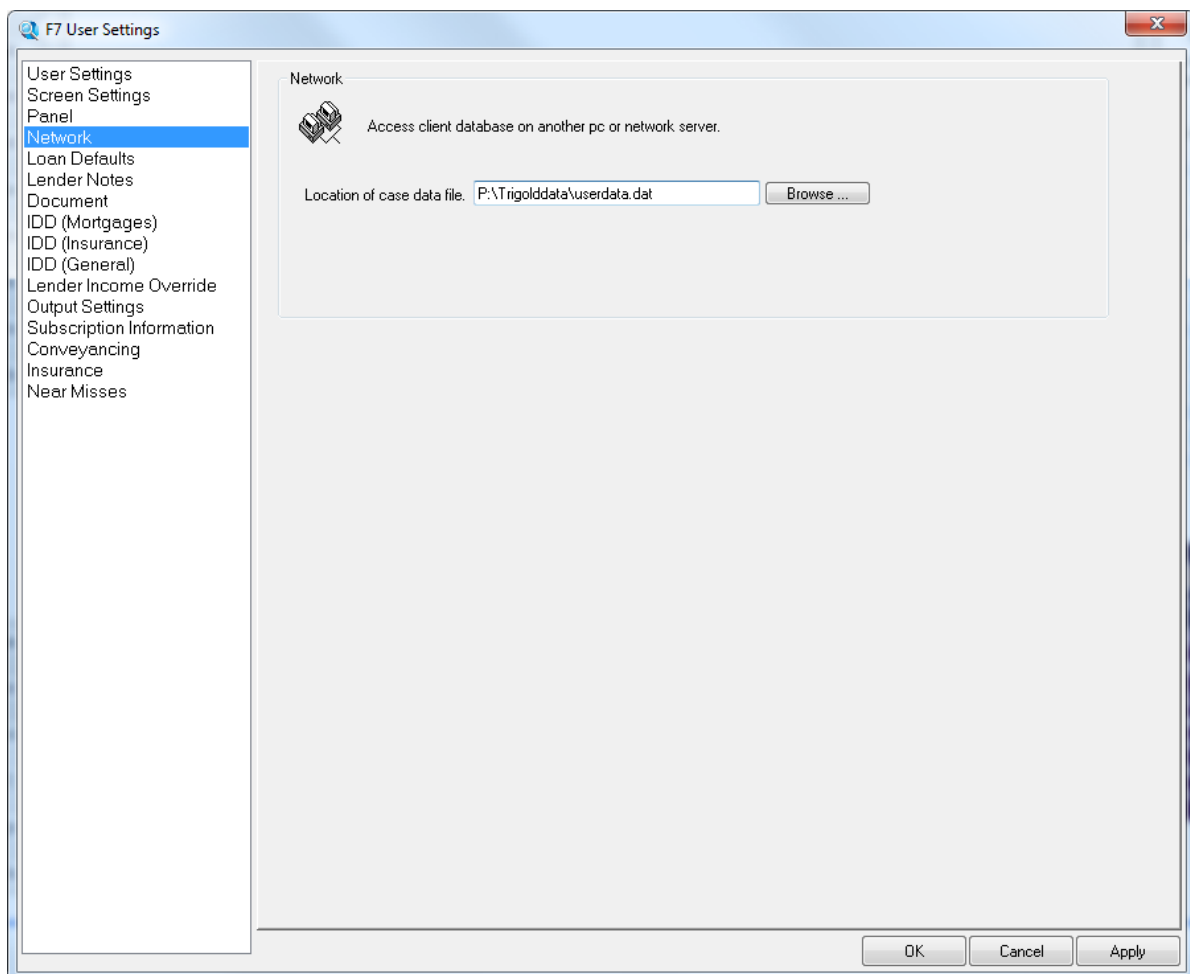
2. Click on your Windows Start button and select either the Run button or Search programs and files
3. Right click and paste the Prospector data location and press either enter or click on the OK button
4. The Trigold data location should now open

Step 3: Copying across your client data

1. You need to copy (right click on the file and click on the Copy option) and copy the following files:
 - Userdata.dat
 - Factfind.mdb
 - Outbox.mdb
 - Saved (yellow folder)
2. These files need to be saved in the folder you have created on your network drive

Step 4: Networking via the Trigold User Settings

1. Launch Trigold
2. Click on the User Settings button located in the bottom left hand corner or press F7 on your keyboard
3. Click on the Network tab, then click on the Browse button and locate the Trigold folder you created on the network. Highlight the userdat.dat file and click on the OK button. The location of the data file should now show the network path to the userdata.dat. For example, P:\Trigolddata\userdata.dat



Trigold Networking Guide

4. Close the User Settings and then close and re-launch Trigold to access the networked client data
5. If you wish to network to the same client database on other Trigold installations, please repeat step 4